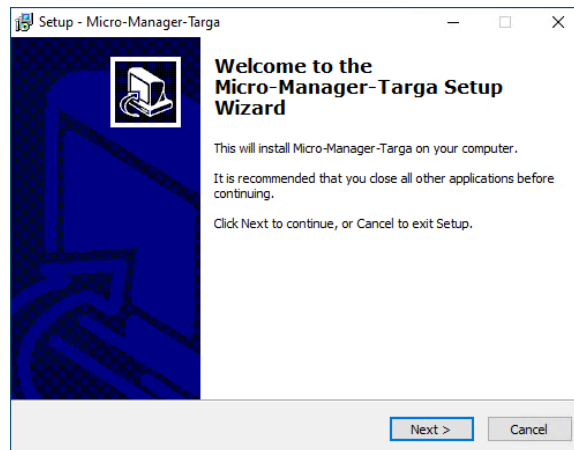


## TARGA 2.1.3 - Installation

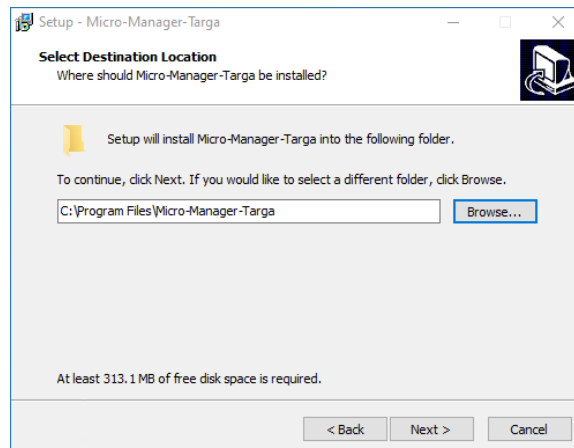
The newest release of the TARGA plugin for Micro-Manager includes new features and critical bug fixes, offering significant improvements over previous versions. These updates improve performance and user experience, ensuring a smoother and more reliable operation of the TARGA. Follow the instructions below to install the latest software release.

**NOTE:** Steps 1-2 below are required for systems updating from TARGA 2.0.21 to 2.1.3.

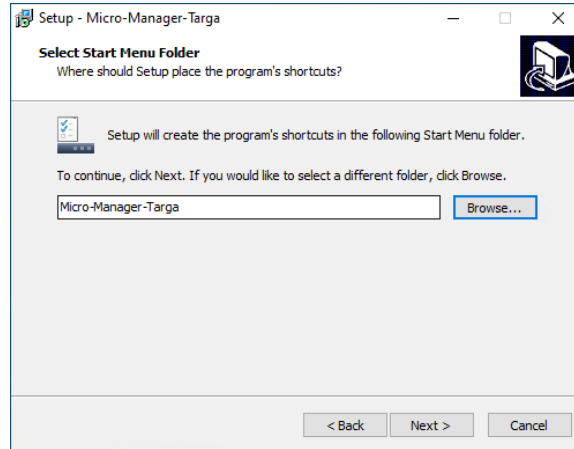
1. Copy the existing Micro-Manager-Targa folder (in Program files on the C: Drive) onto the D: Drive.
  - a. The copy saved onto the D: Drive will serve as a backup file in case there is an issue with installation.
2. Delete the "jre" subfolder from the existing installation of Micro-Manager-Targa.
3. Download the installer *TARGA Setup 2.1.3* via the shared [link](#).
4. Double click on the installer to open the Setup Wizard and begin the installation process.



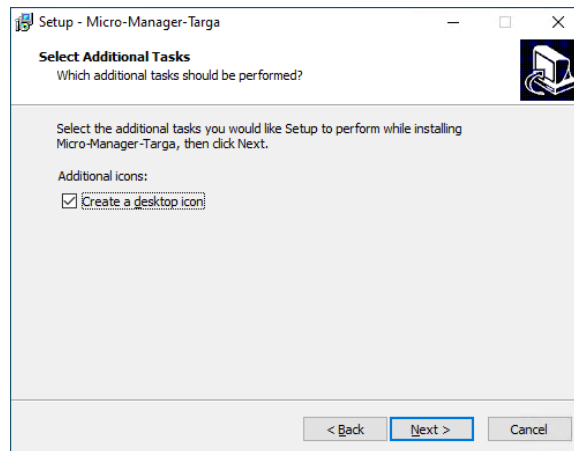
5. Install Micro-Manager-Targa into the default location.



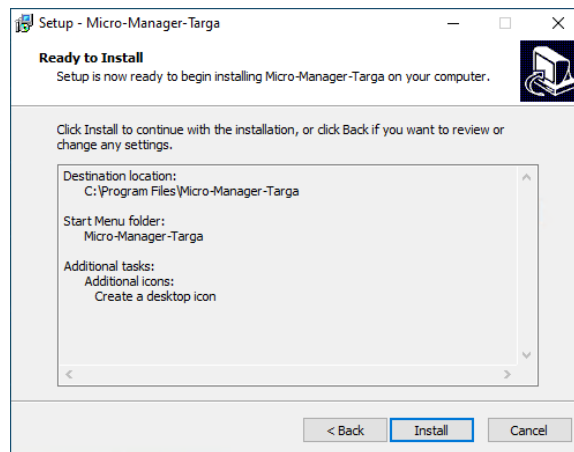
- Place the program's shortcuts in the default location.



- Create a desktop icon for Micro-Manager-Targa for easy access to TARGA 2.1.3.



- Review the Setup and complete the installation of Micro-Manager-Targa.



- A reboot of the system may be required to complete the installation of Micro-Manager-Targa. Reboot the system to begin using TARGA 2.1.3.